

Strengthening Our Community in the Face of Population Decline



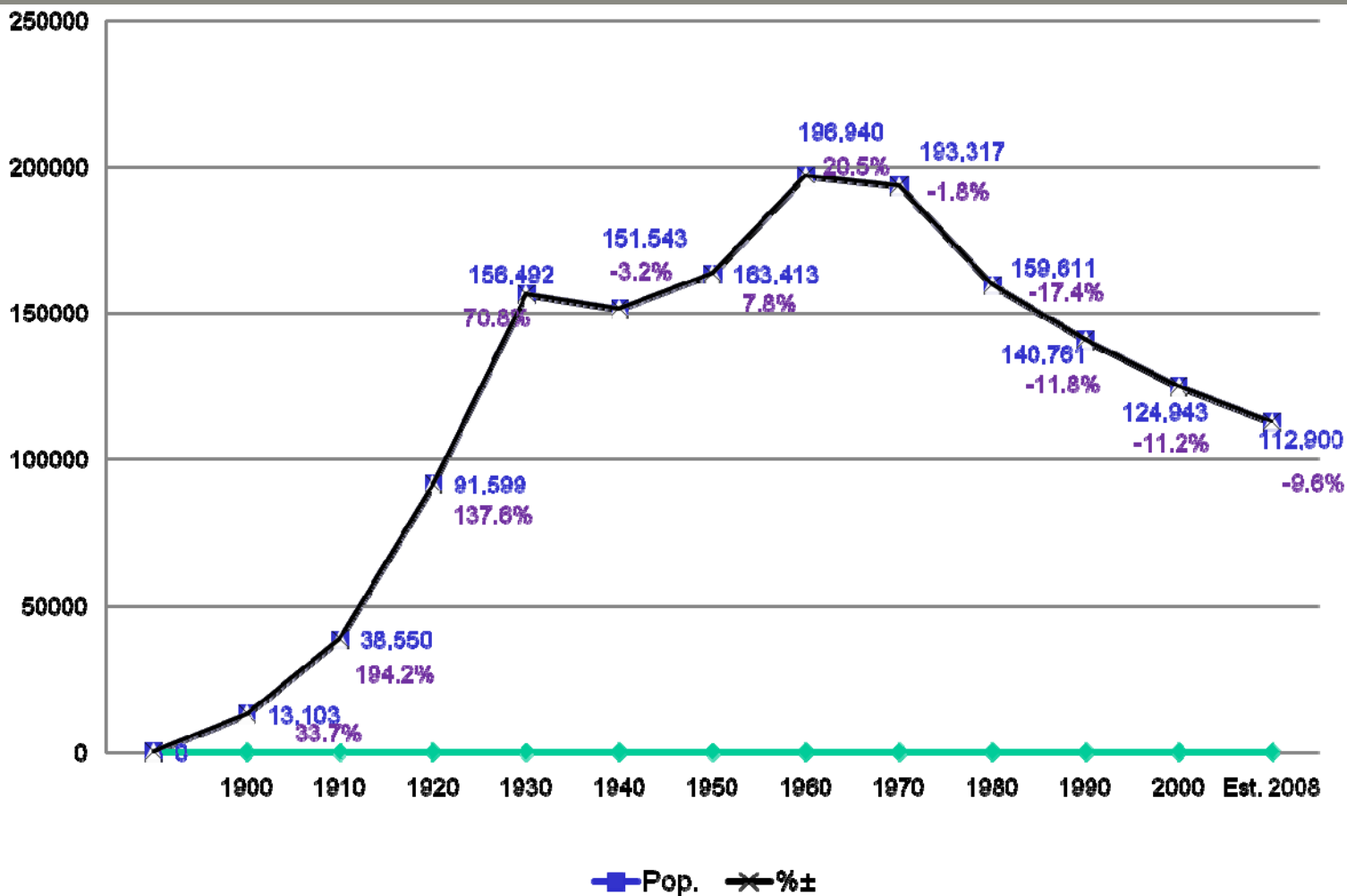
Dayton Ave. & Dupont St. June 2009



Dayton Ave. & Dupont St. September 2009

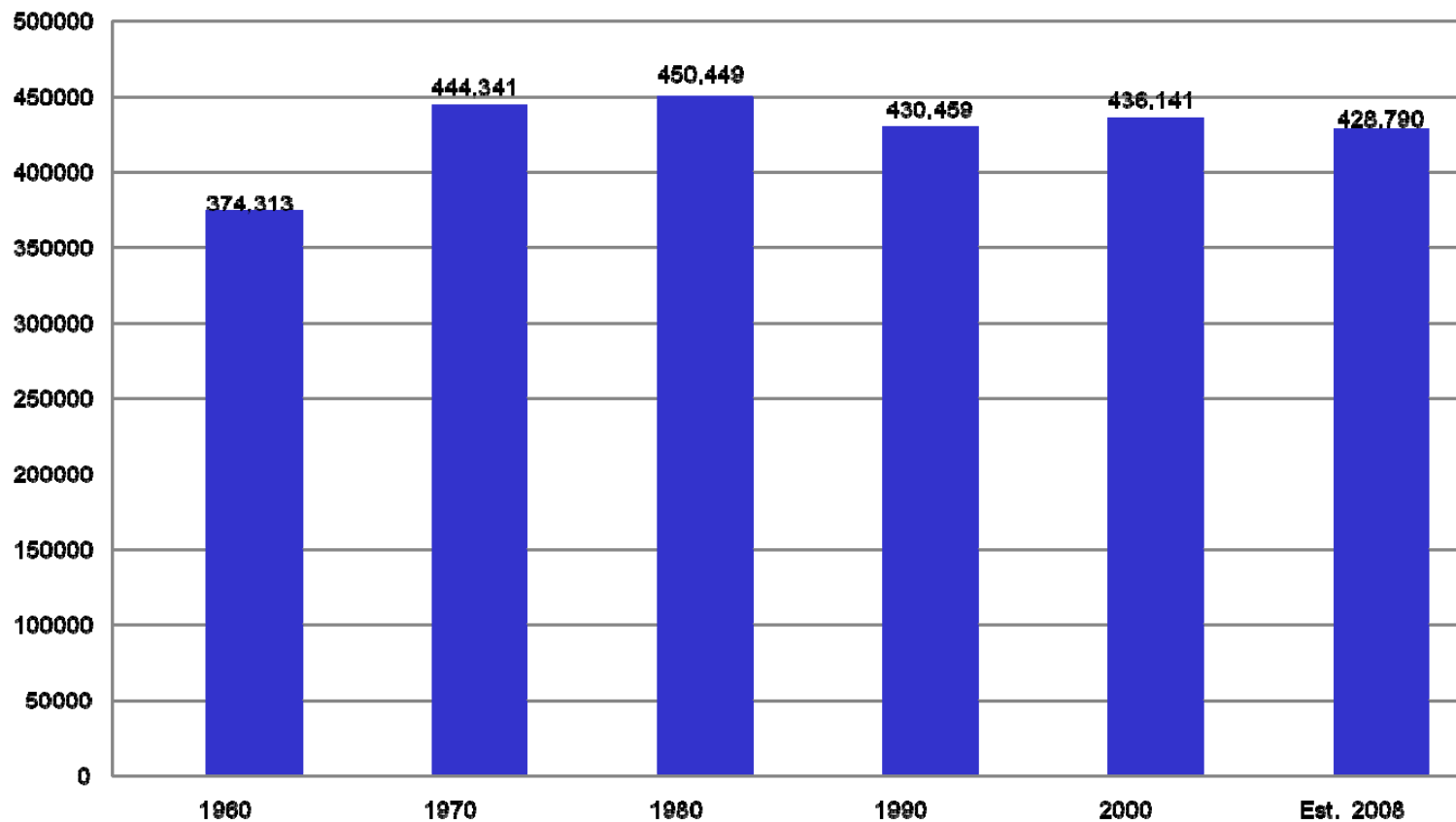
Genesee County Population Trends

Historical Populations of Flint, Michigan by Decennial Census: 1900 to Present



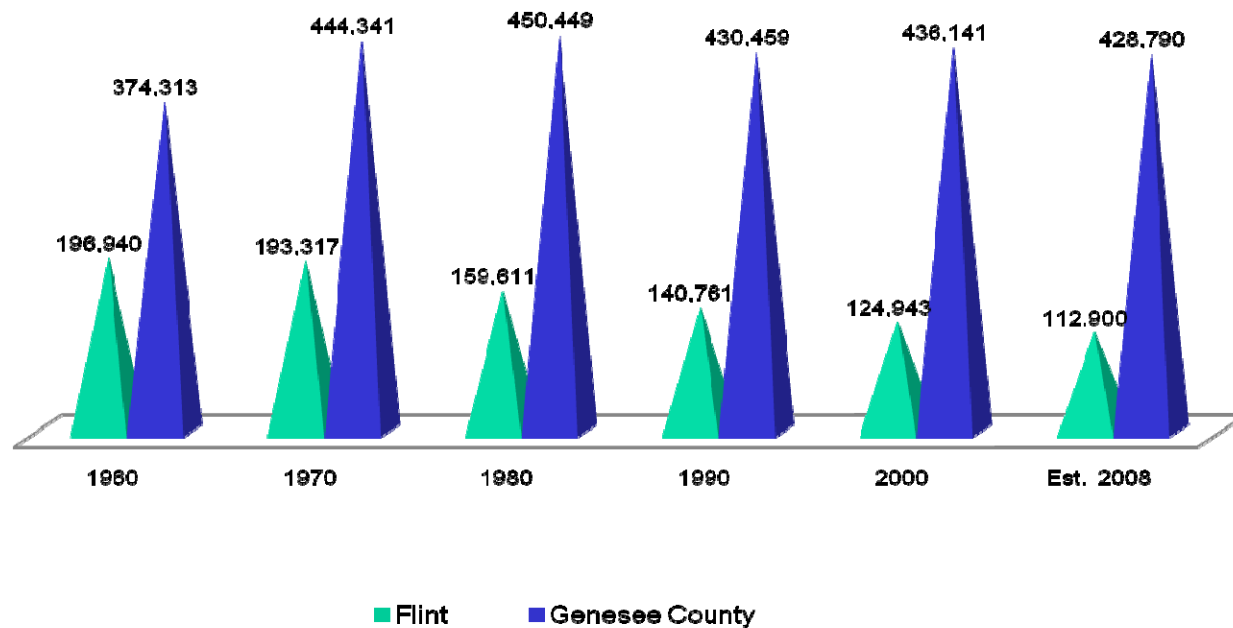
U.S. Census B

Populations of Genesee County by Decennial Census: 1960 to Present



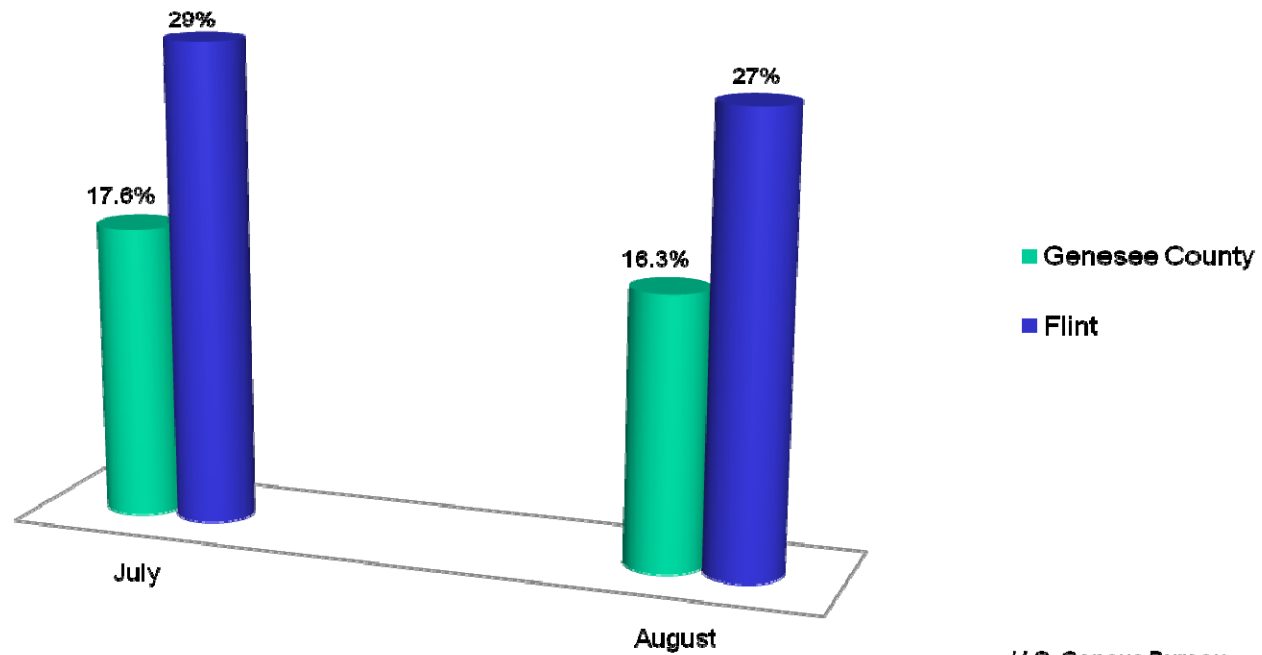
U.S. Census Bureau

Populations of Genesee County and Flint by Decennial Census: 1960 to Present



U.S. Census Bureau

Flint and Genesee County Unemployment Rate: July and August 2009

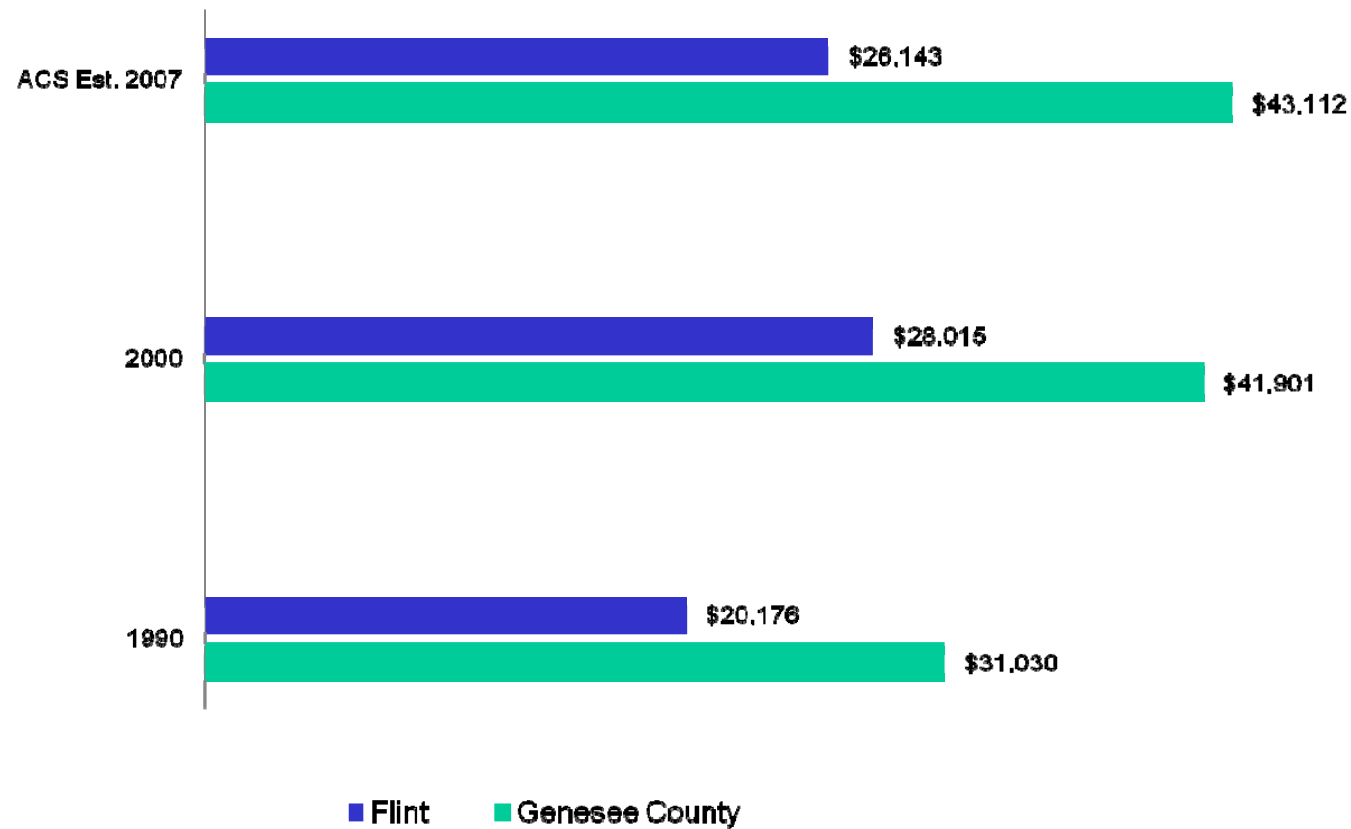


U.S. Census Bureau

Flint and Genesee County Median Household Income

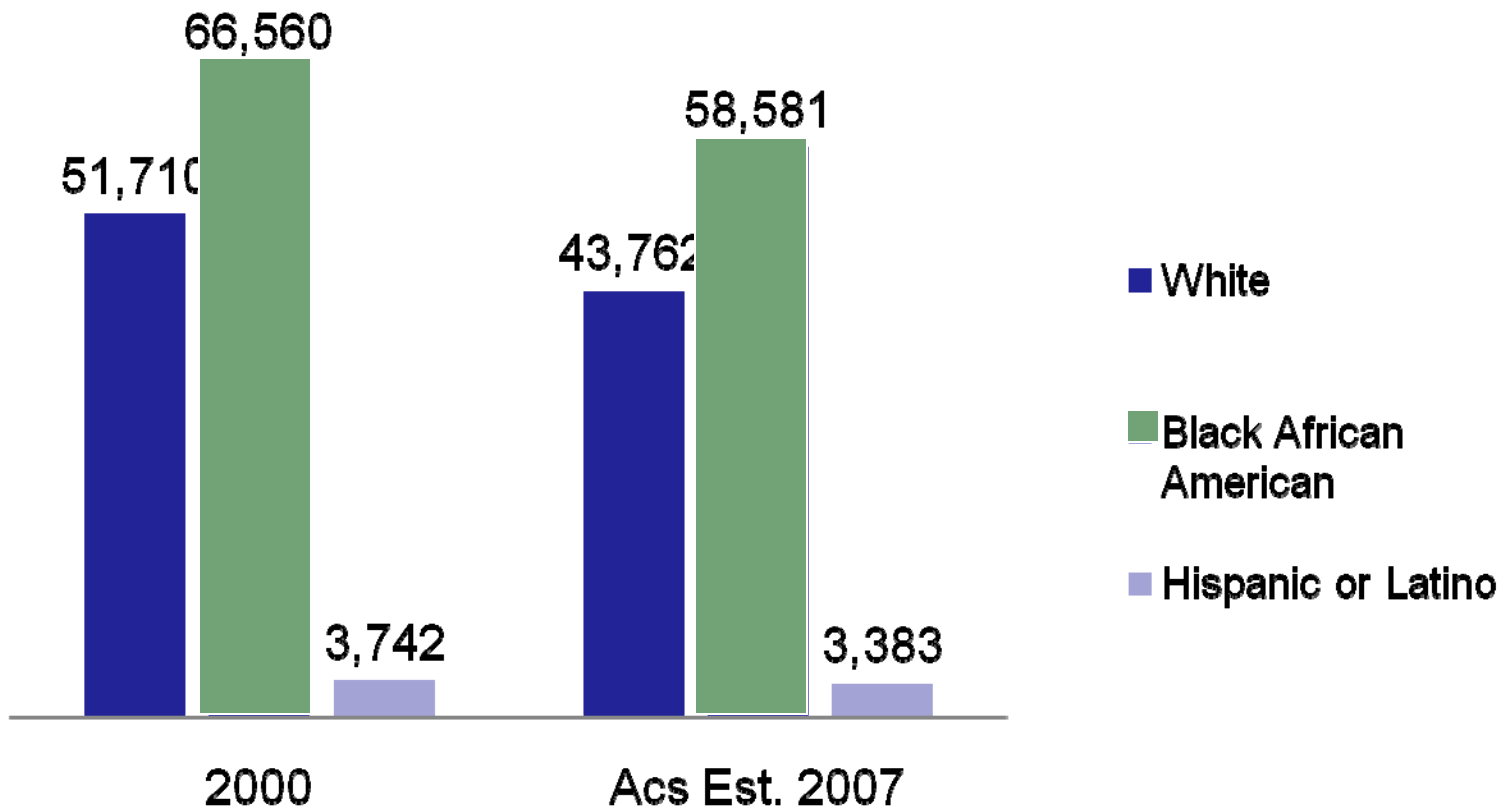
(Margin of error ± 2.075)

(Margin of error ± 1.689)



U.S. Census Bureau

Flint Population by Race



U.S. Census Bureau

Abandoned Land: Challenges, Opportunities and Land Bank Interventions

Doug Weiland
Genesee County Land Bank



Population Loss in Flint

- Since 1960, Flint has lost about 90,000 people
- About 36,000 households lost



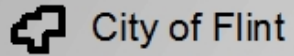
Abandoned Land In Flint

- 12,000 vacant lots
- 6,000 abandoned houses
- Total of 18,000 parcels
- 32% of all the property in Flint is abandoned

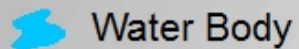


Residential Vacancy by Block, 2008

Legend



Street



Vacancy Rate (Parcel Number)

0% - 9%

10% - 19%

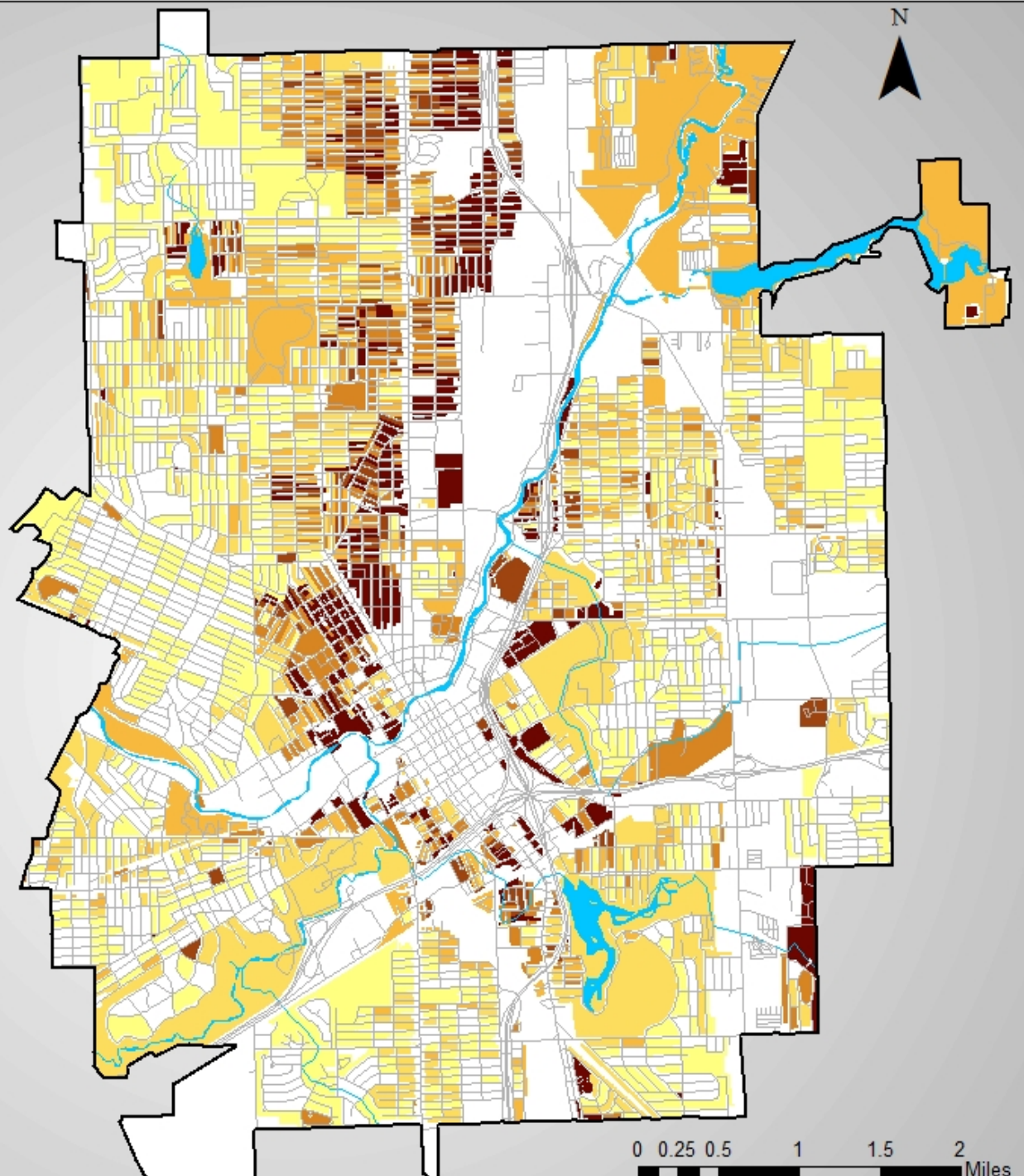
20% - 29%

30% - 39%

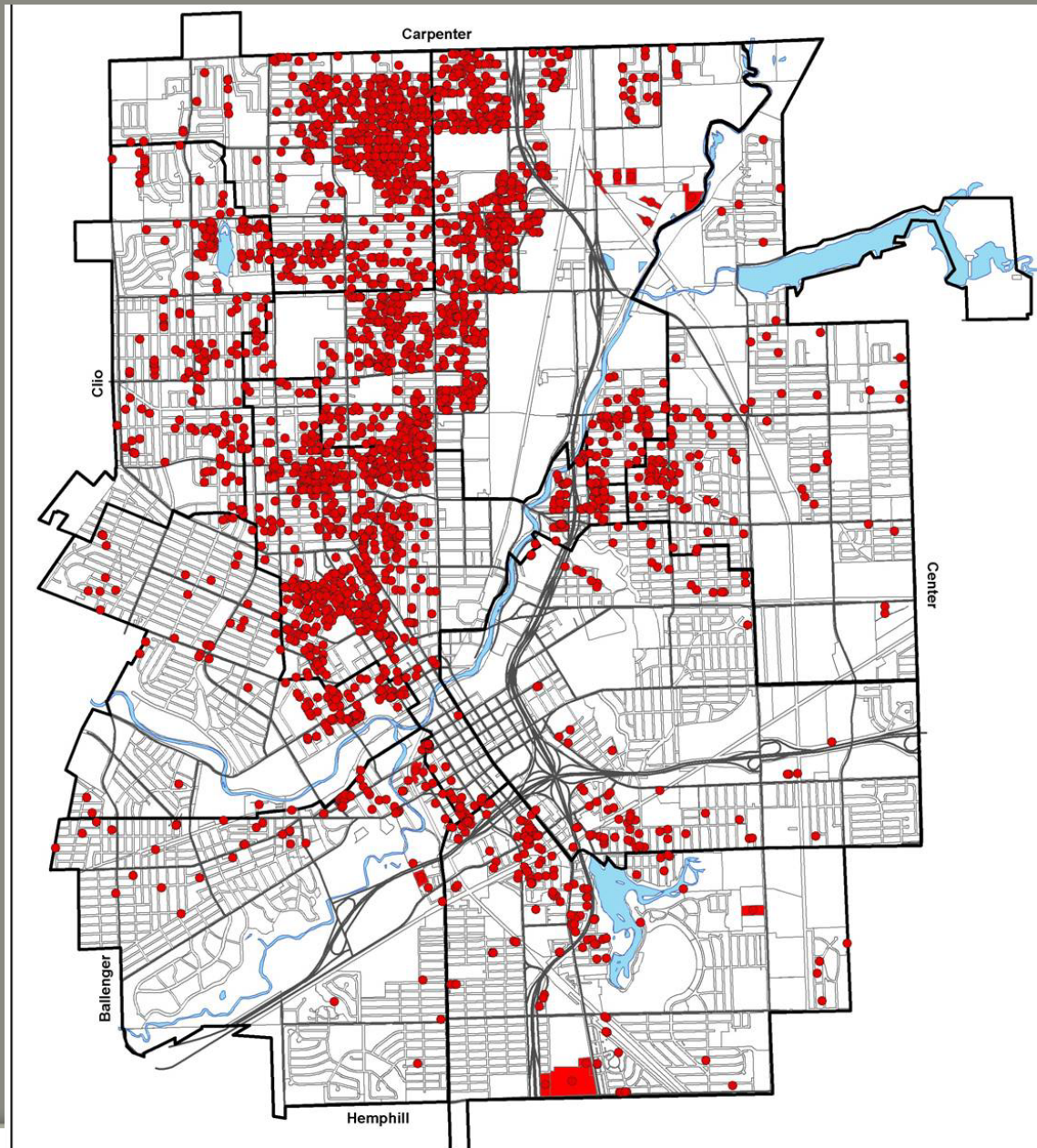
40% - 49%

50% and more

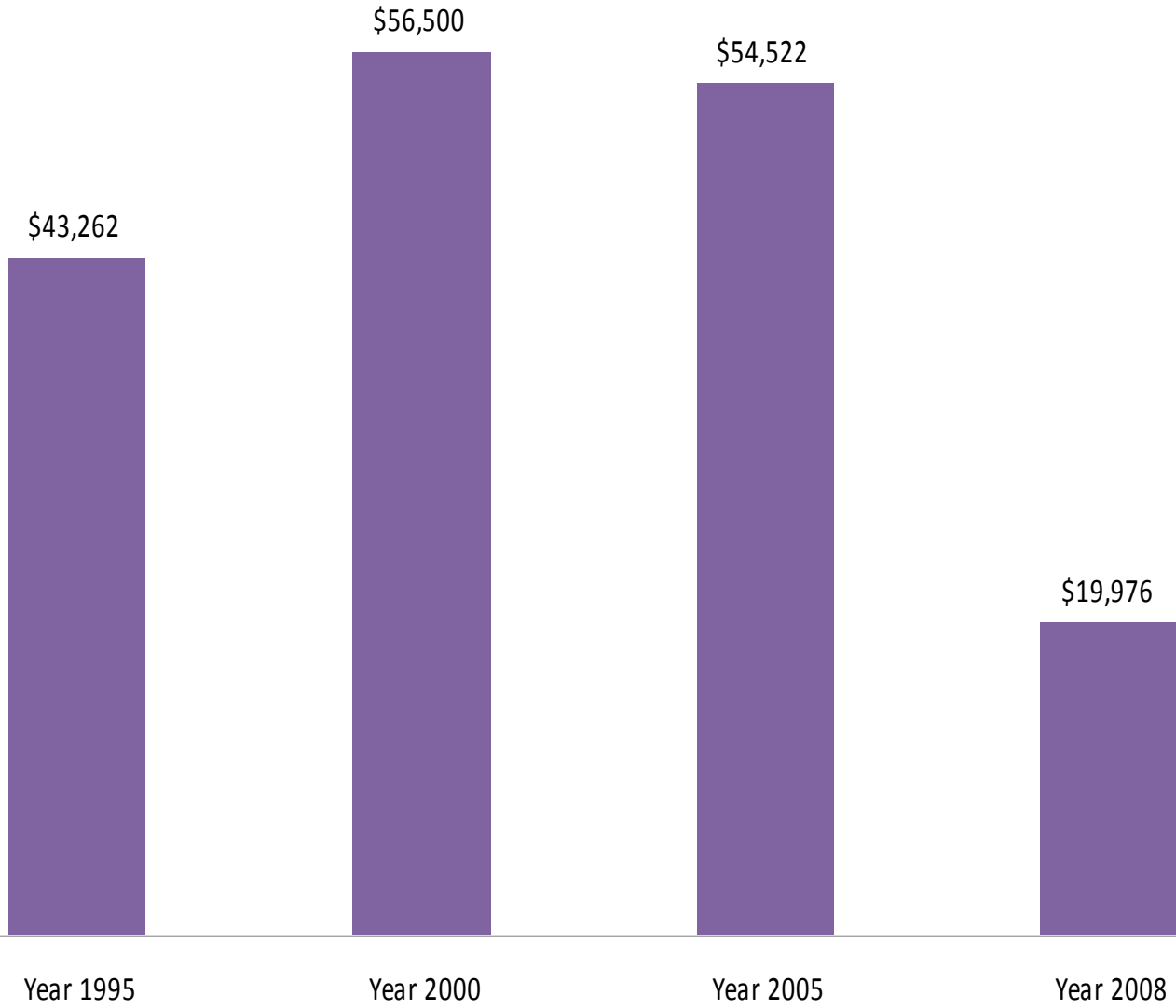
Source: Genesee Land Bank



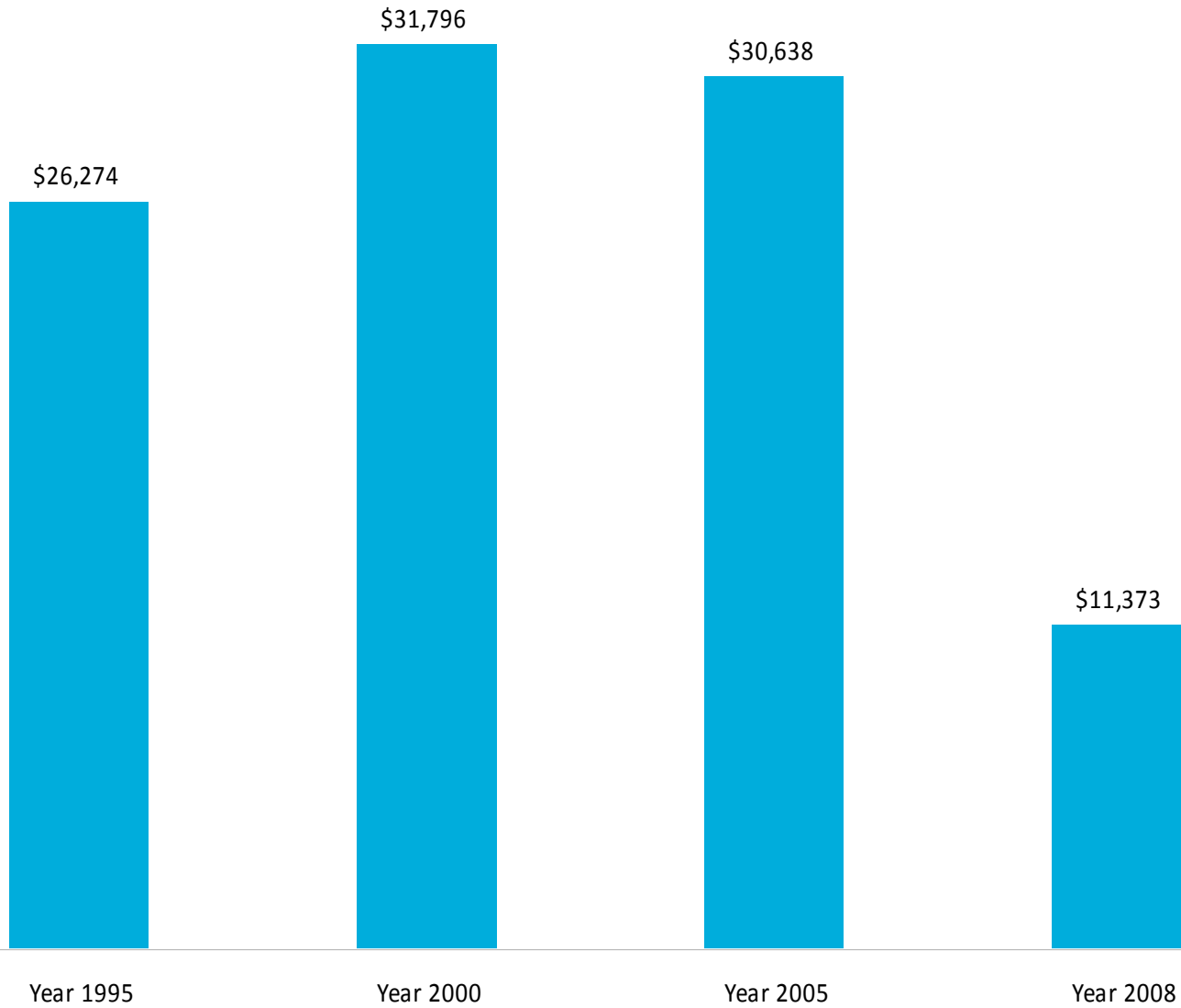
3624 Land Bank properties



City of Flint Average Sales Price



Beecher District Average Sales Price



All of Genesee County excluding Beecher & City of Flint Average Sales Price



Challenges & Opportunities






City of Flint

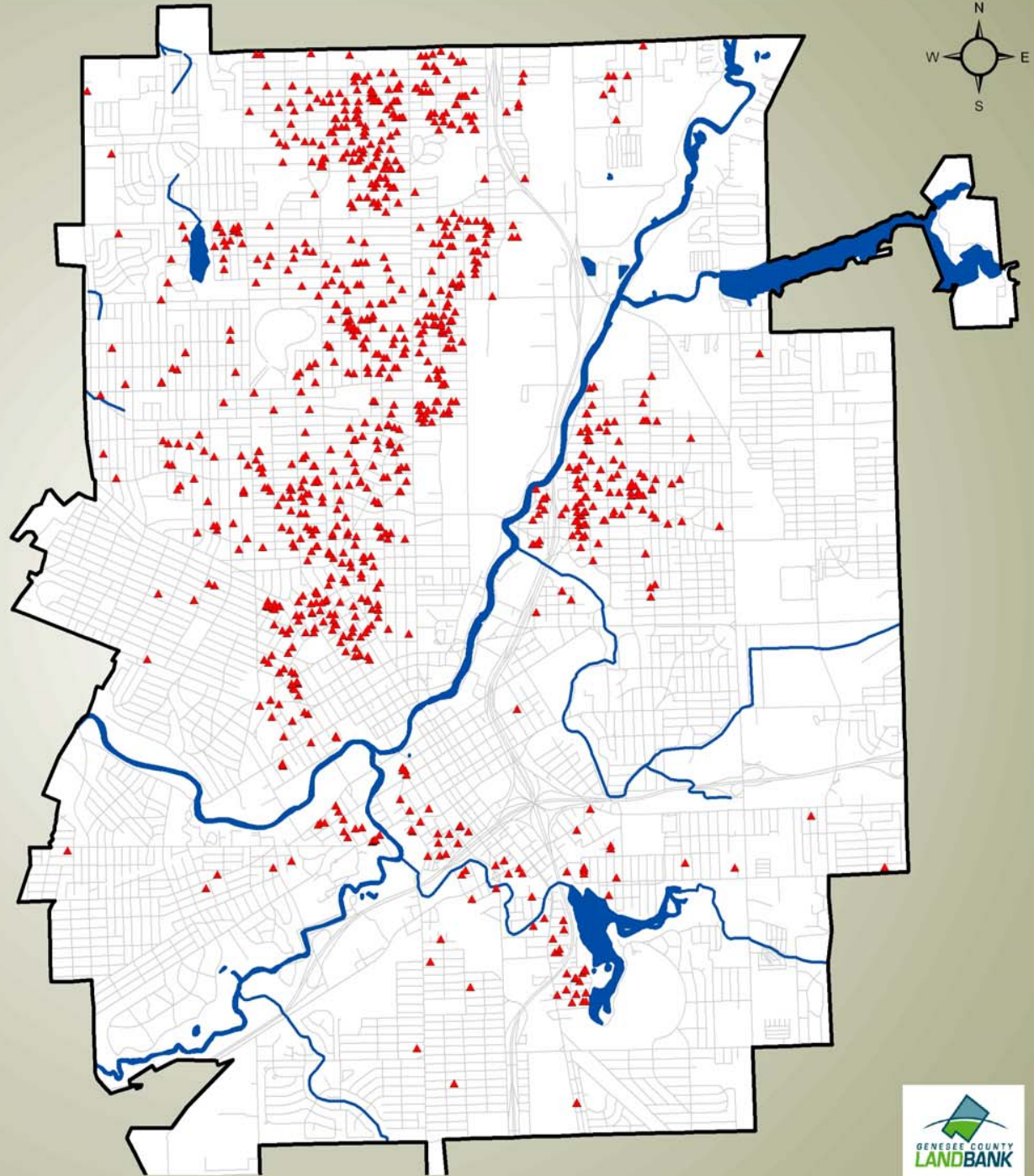
Land Bank Demolitions Completed

Legend

-  City of Flint
-  Rivers
-  Lakes
-  Roads

Demolitions

-  Completed Demolitions
Total = 914




City of Flint

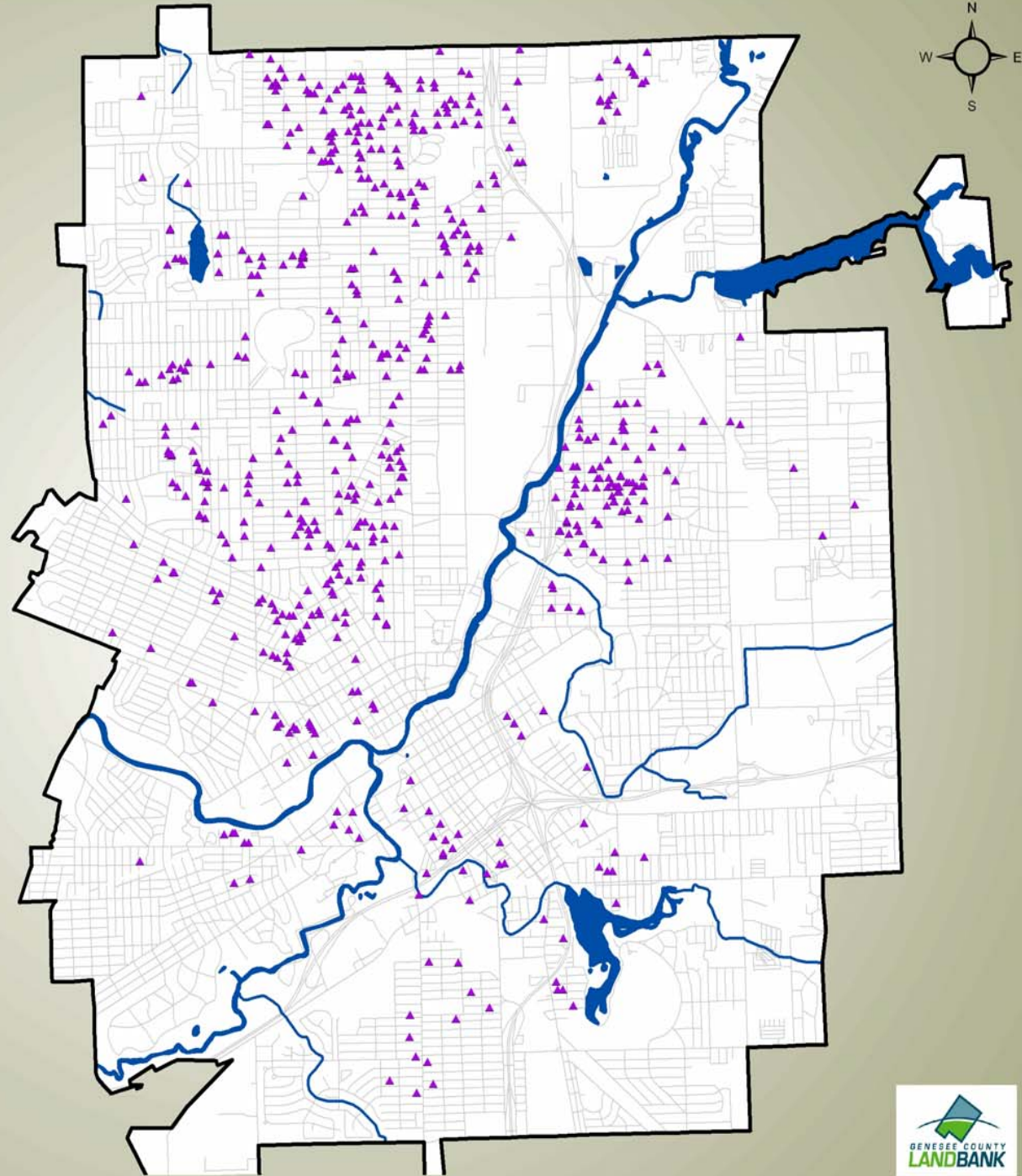
Land Bank Demolitions ~Potential~

Legend

-  City of Flint
-  Rivers
-  Lakes
-  Roads

Demolitions

-  Potential Demolitions
Total = 615



Renovations, Sales & Rentals




City of Flint

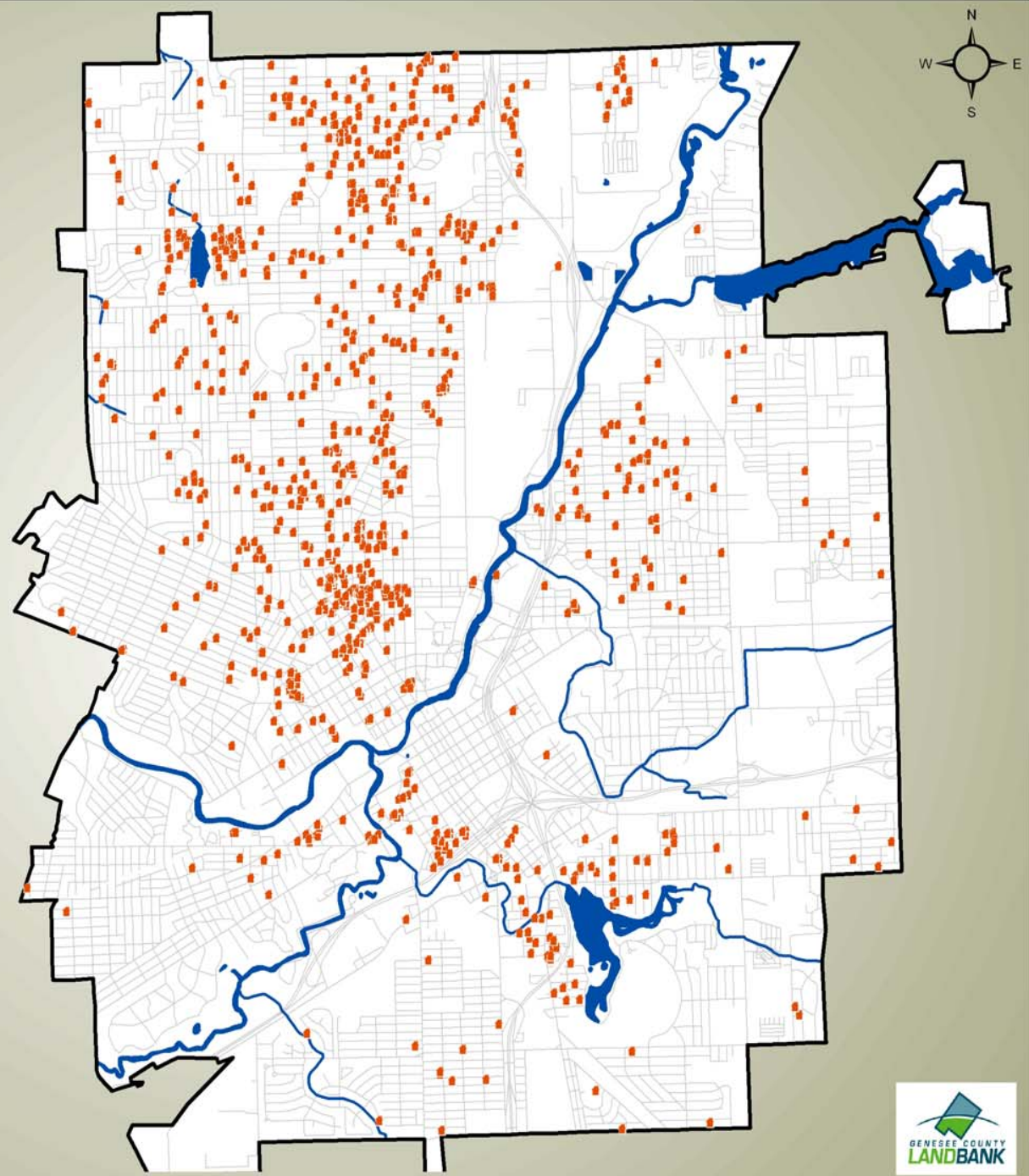
Land Bank Property Sales

Legend

-  City of Flint
-  Rivers
-  Lakes
-  Roads

Property Sales

-  Residential Lots,
Commercial, Industrial,
Other
- Total Sold = 1045**



0 0.25 0.5 1 1.5 2 Miles



Property Maintenance



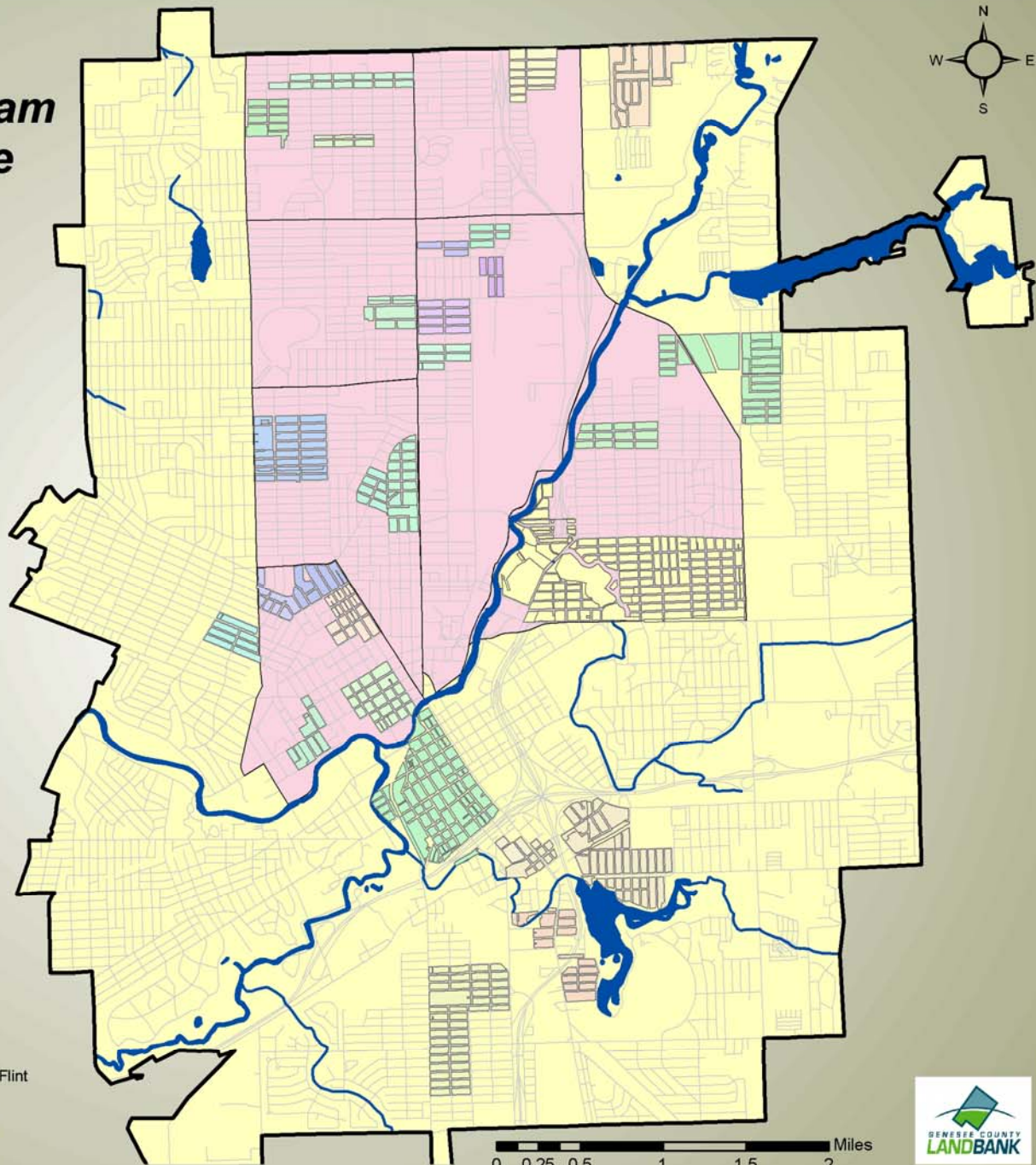
City of Flint

Clean and Green Program Property Maintenance Coverage Areas

Legend

- Area Coordinated by City of Flint
- Area Coordinated by Land Bank
- Block by Block Revitalization Corporation
- Cathedral of Faith COGIC
- Christian XPosure
- Church Without Walls
- Eliezer Church
- East Piper Avenue Block Club
- Freedom Center North
- Flint Urban Gardening and Land Use Corporation
- Gift of Life COGIC
- Greater New Bethel COGIC
- Goodwill Industries of Mid Michigan
- Grand Traverse District Neighborhood Association
- Greater Efsians COGIC
- Holy Ghost COGIC
- Holy Hill COGIC
- International Academy of Flint
- Kearsley Longway Eastside Area Neighborhood
- Metropolitan Baptist Church
- Mount Tabor Missionary Baptist Church
- My Brothers Keeper
- Neighbors
- New Life COGIC
- Northeast Carpenter Road Block Club
- Northeast Village Citizens District Council
- Open Door Temple COGIC
- Salem Housing CDC
- T.R Harris CDC
- Urban Community Youth Outreach

- City of Flint
- Rivers
- Lakes
- Roads



Side Lots, Adopt-a-Lot, Clean and Green

Thanks for making our
community **CLEAN &
GREEN!**

Eastside Neighbors
are taking care of
24 properties
in this area!

GENESEE COUNTY
LANDBANK Clean & Green Program Area



Partner Gardens



Piper Green Corps - Before



Piper Green Corps - After



Harvesting Earth Farm



Urban Community Youth Outreach

City of Flint


Land Bank

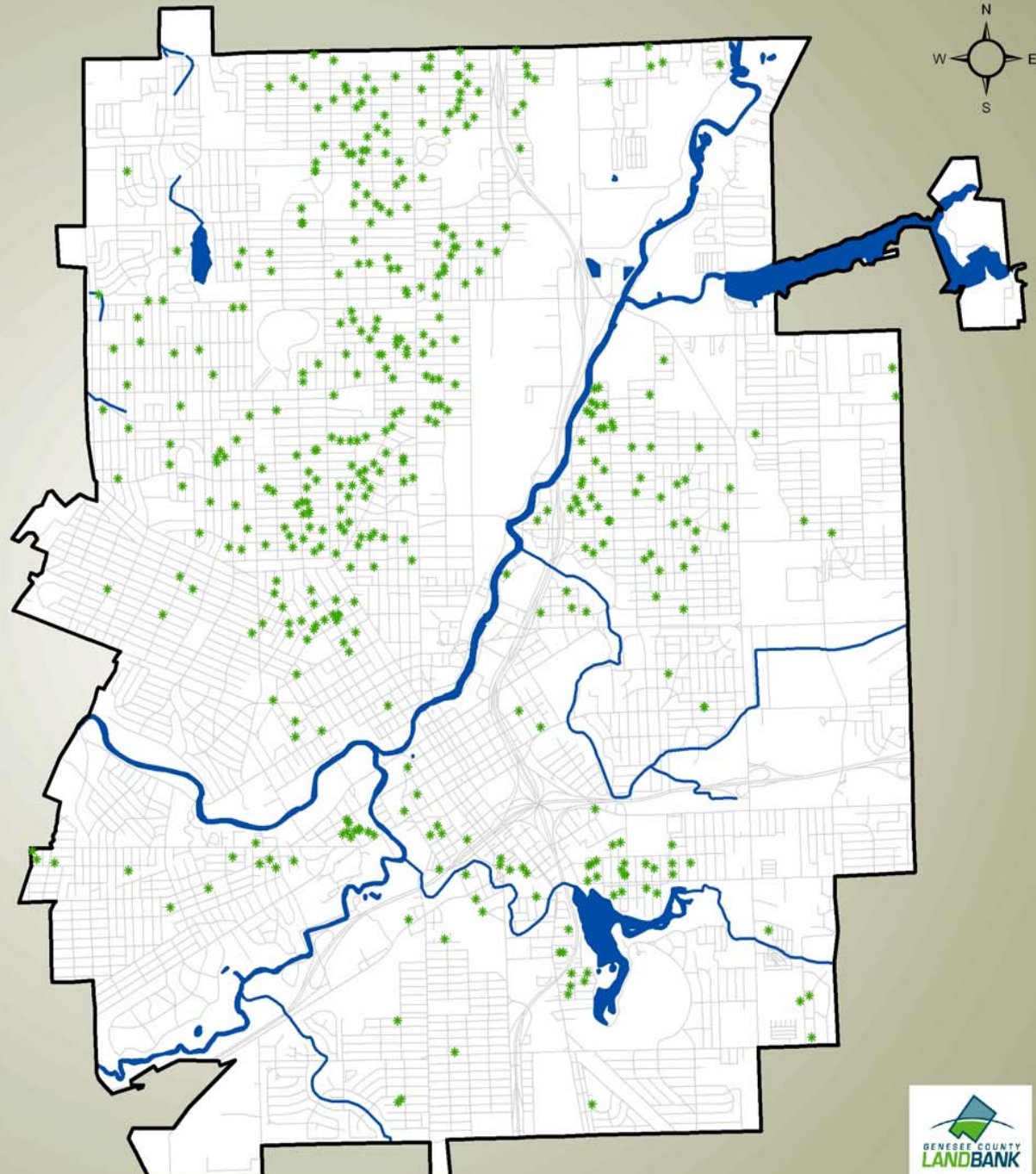
Side Lot Sales

Legend

-  City of Flint
-  Rivers
-  Lakes
-  Roads

Property Sales

-  Side Lots
- Total Sold = 434**



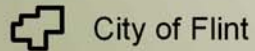
City of Flint

Land Bank Development Projects

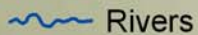
Legend

Project Name

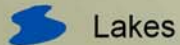
- 1 Rosewood Manor
- 2 FlintNIPP
- 3 Greater Eastside
- 4 Metawananee Hills/Salem Housing
- 5 Hurley Area Housing
- 6 Carriage Town Rehabs
- 7 Hoffmans Deli
- 8 Berridge Place
- 9 Durant
- 10 Land Bank Center
- 11 GTDNA Habitat
- 12 Genesee Business Center



City of Flint

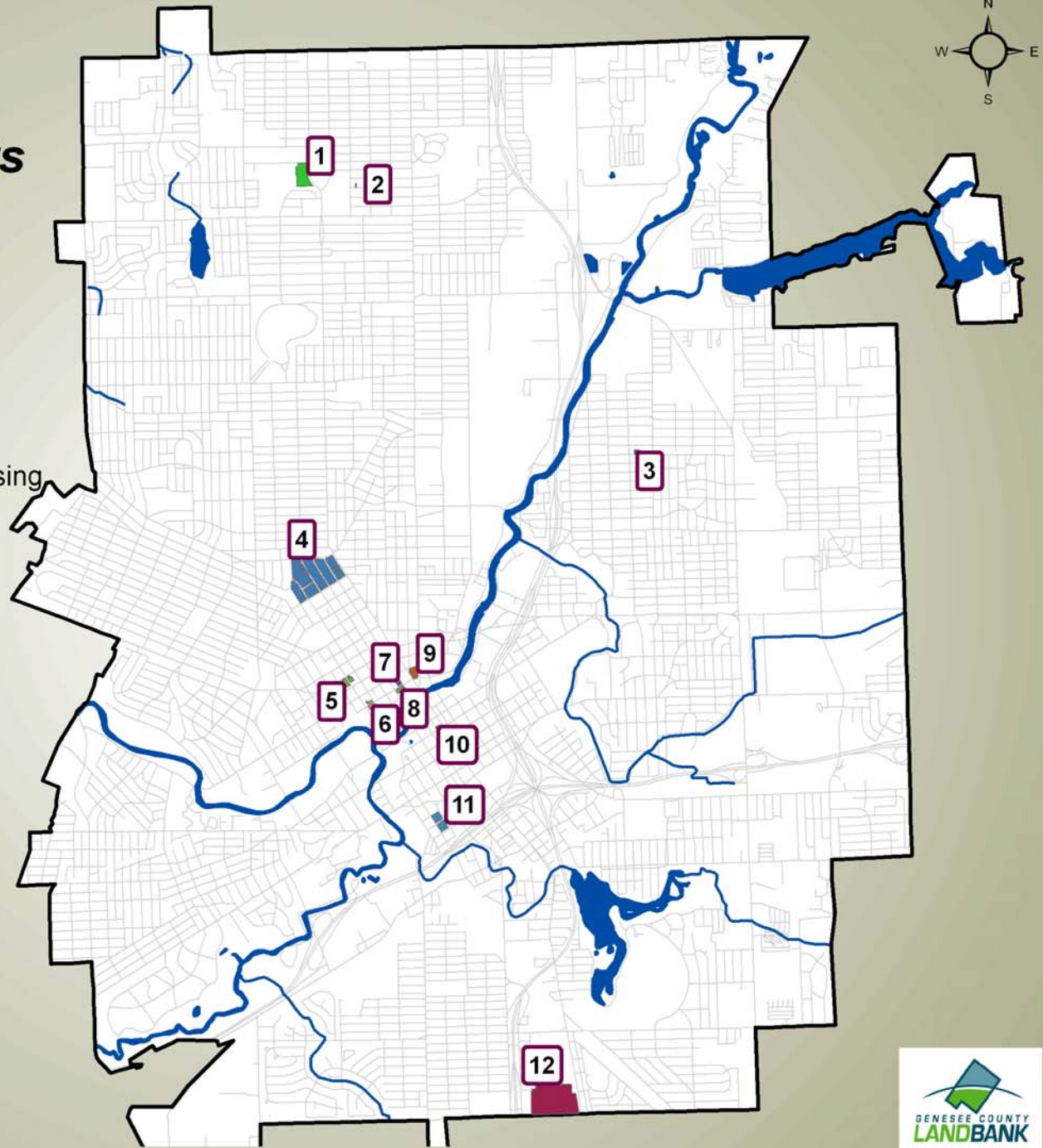


Rivers



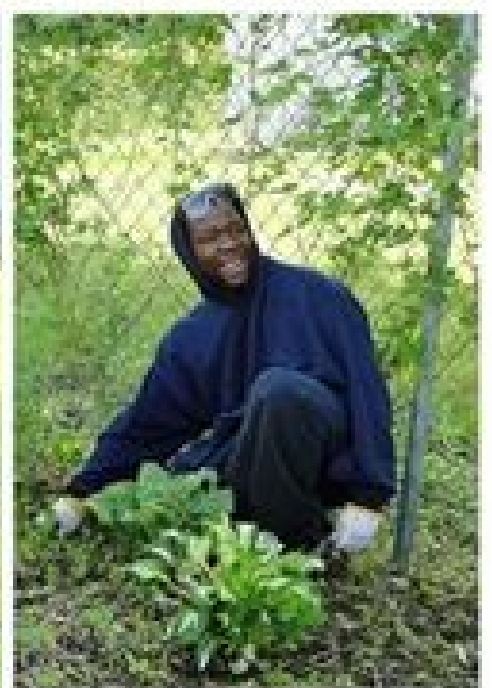
Lakes

Roads





Welcome to
Elm Park
EST. 1967
Wilson Sub.
EST. 1946







Strengthening Our Community in the Face of Population Decline



Dayton Ave. & Dupont St. June 2009



Dayton Ave. & Dupont St. September 2009